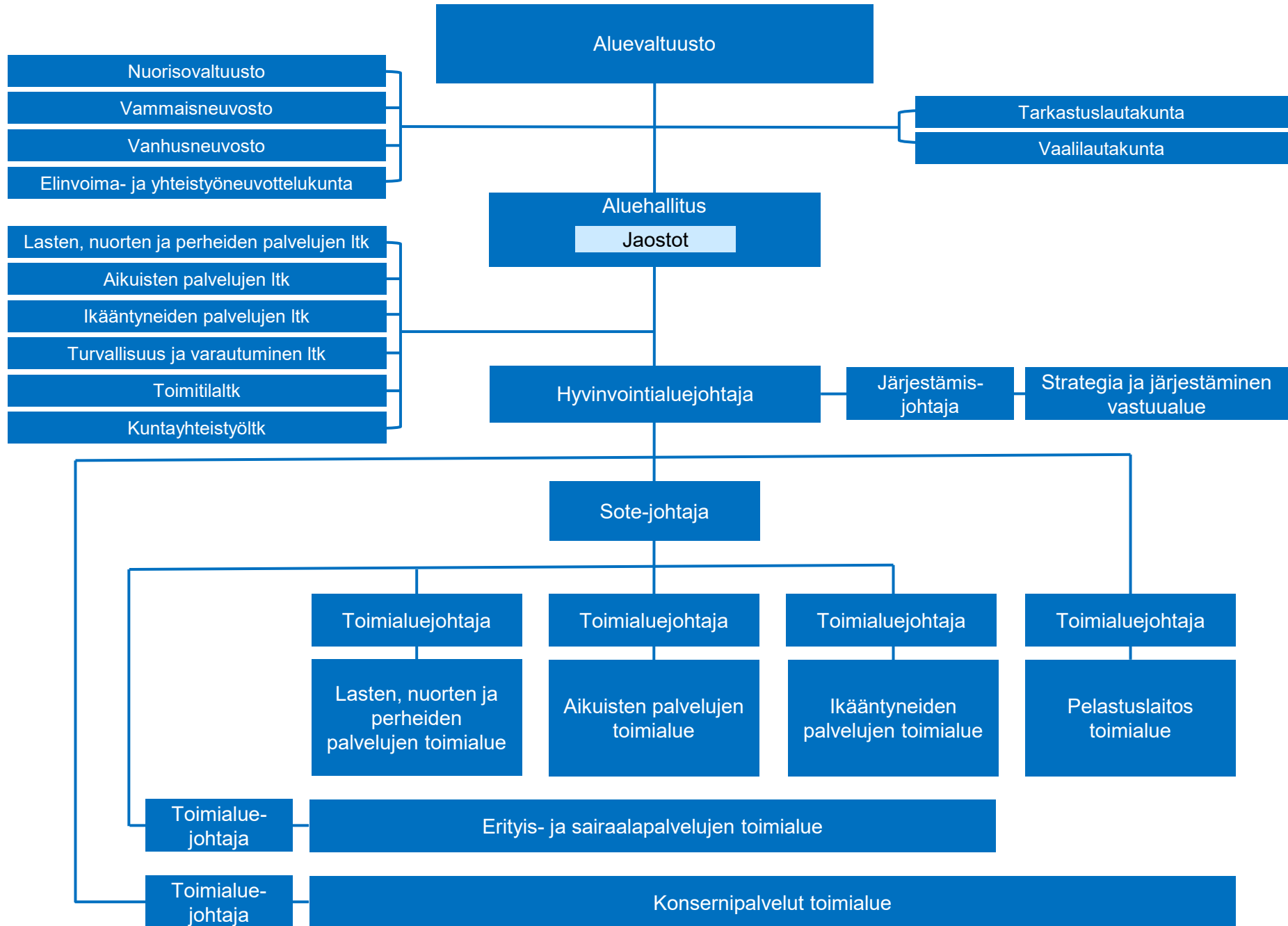




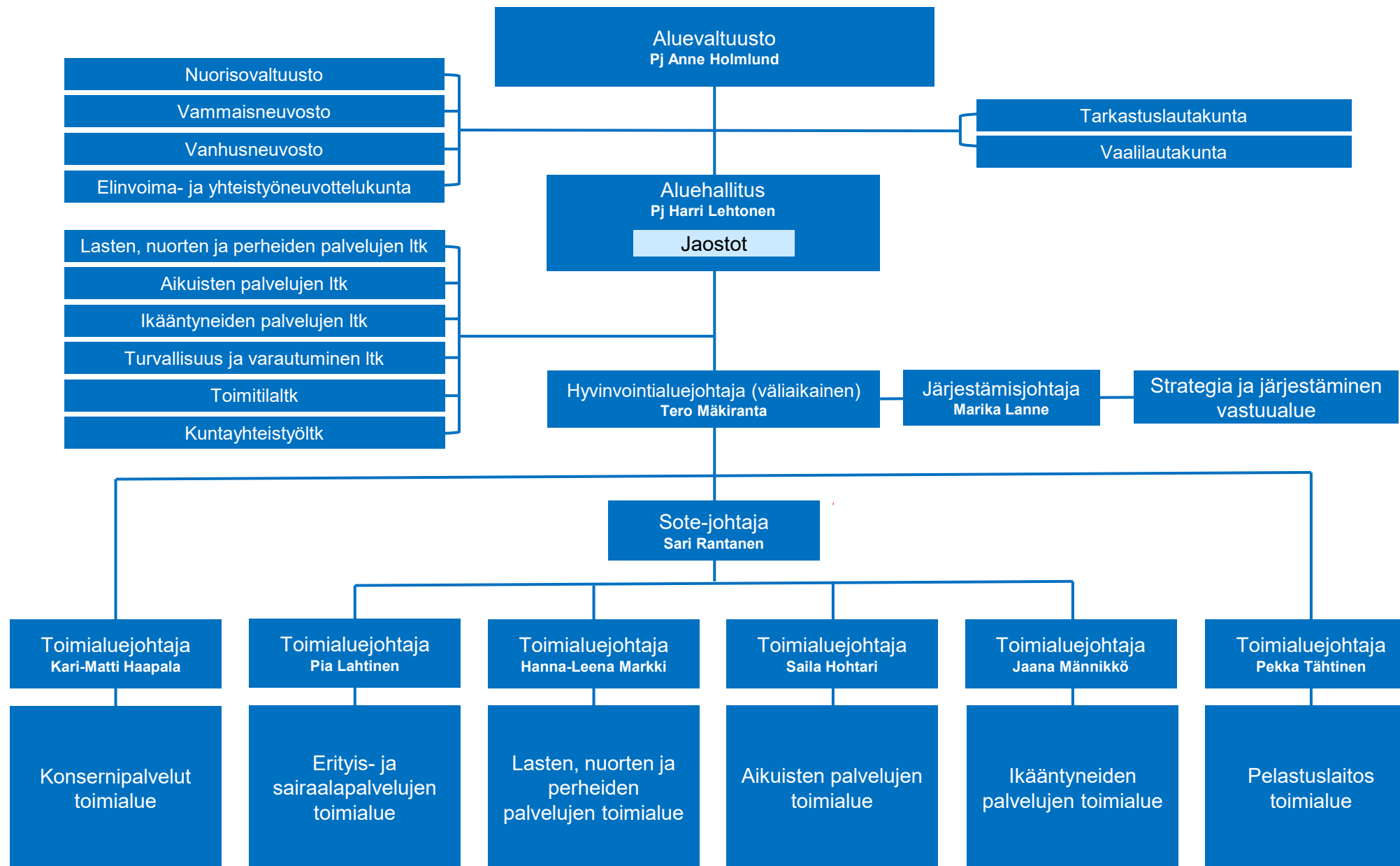
# Satakunnan hyvinvointialueen organisaatio

1.11.2024 alkaen

# Organisaatiorakenne, kokonaisuus

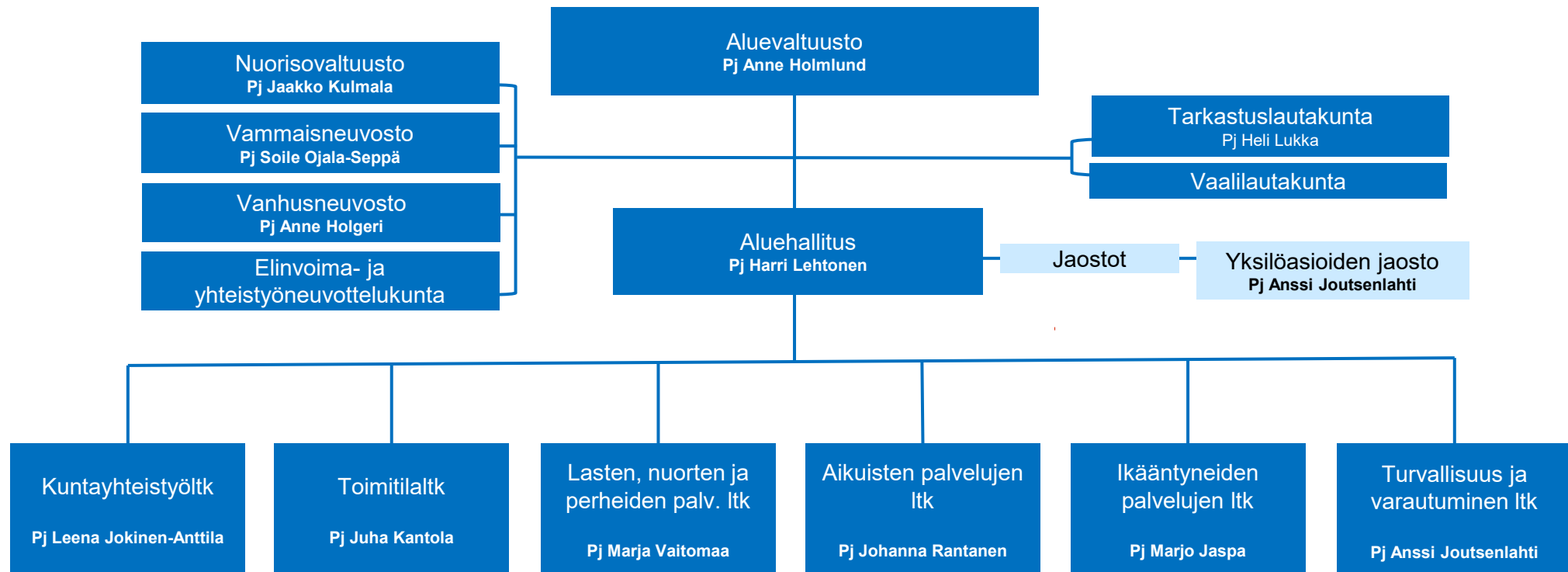


# Poliittinen päätöksenteko ja johtamisjärjestelmä



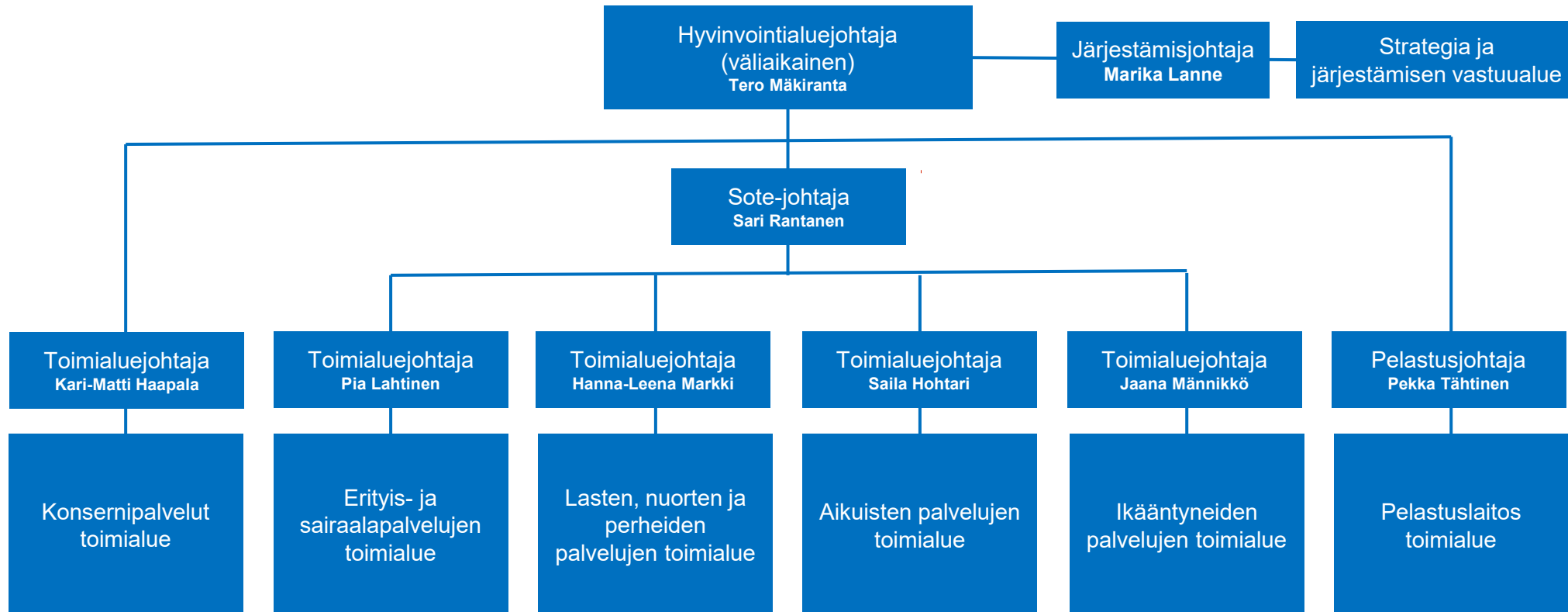


# Poliittisen päätöksenteon organisaatorakenne



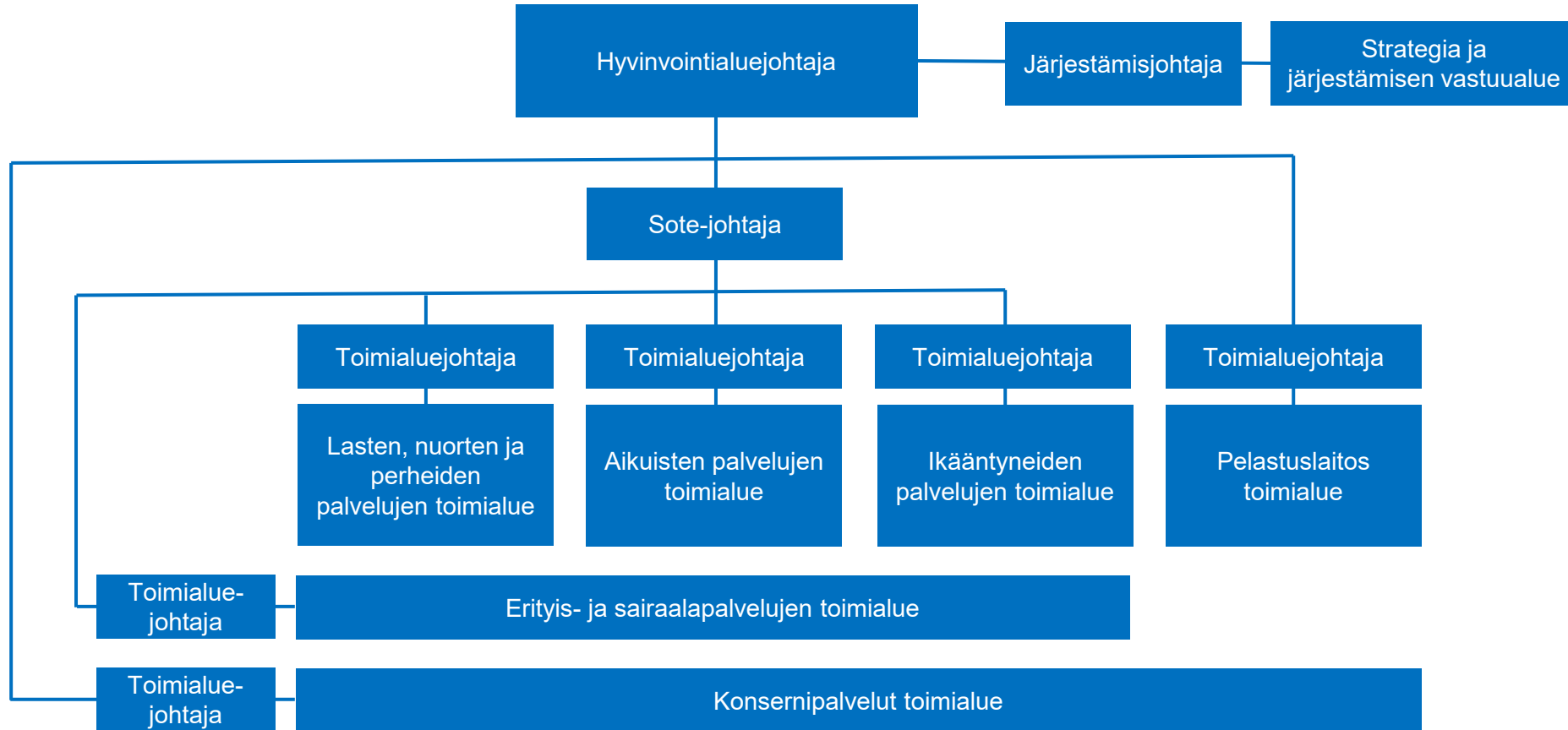


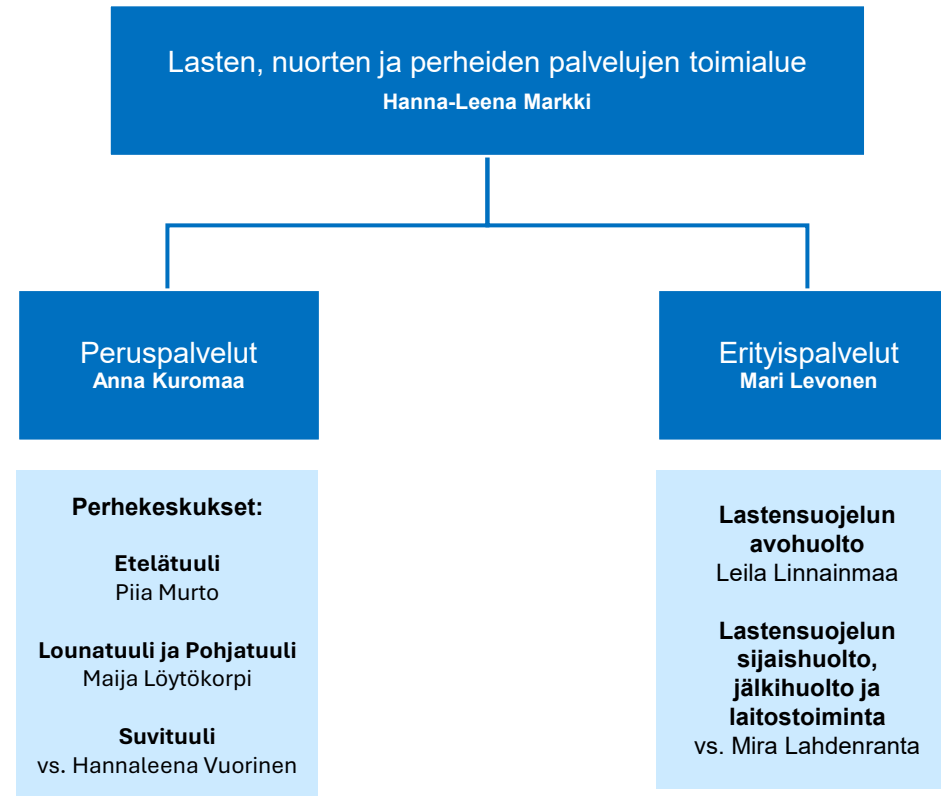
# Johtamisjärjestelmä

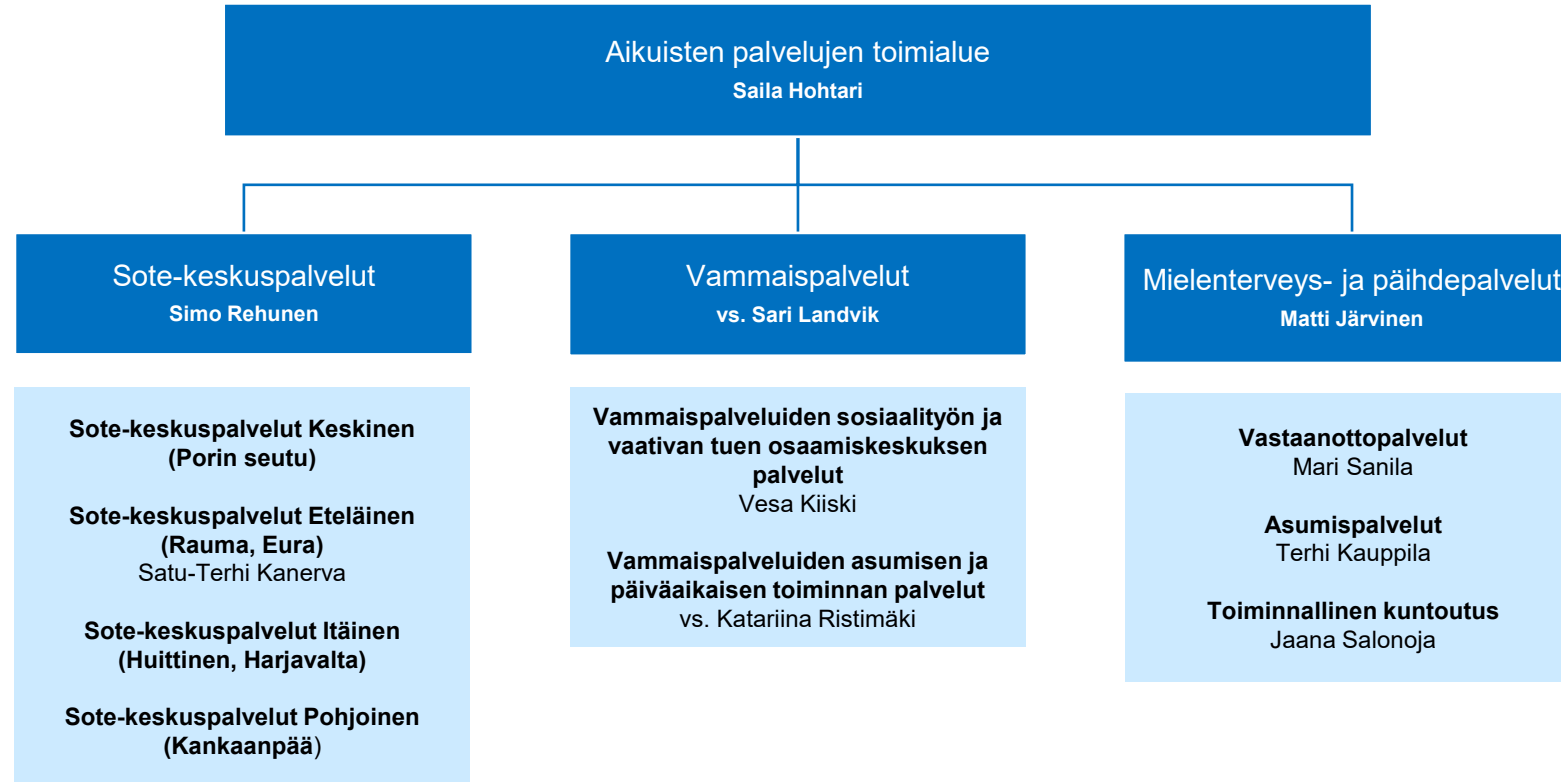




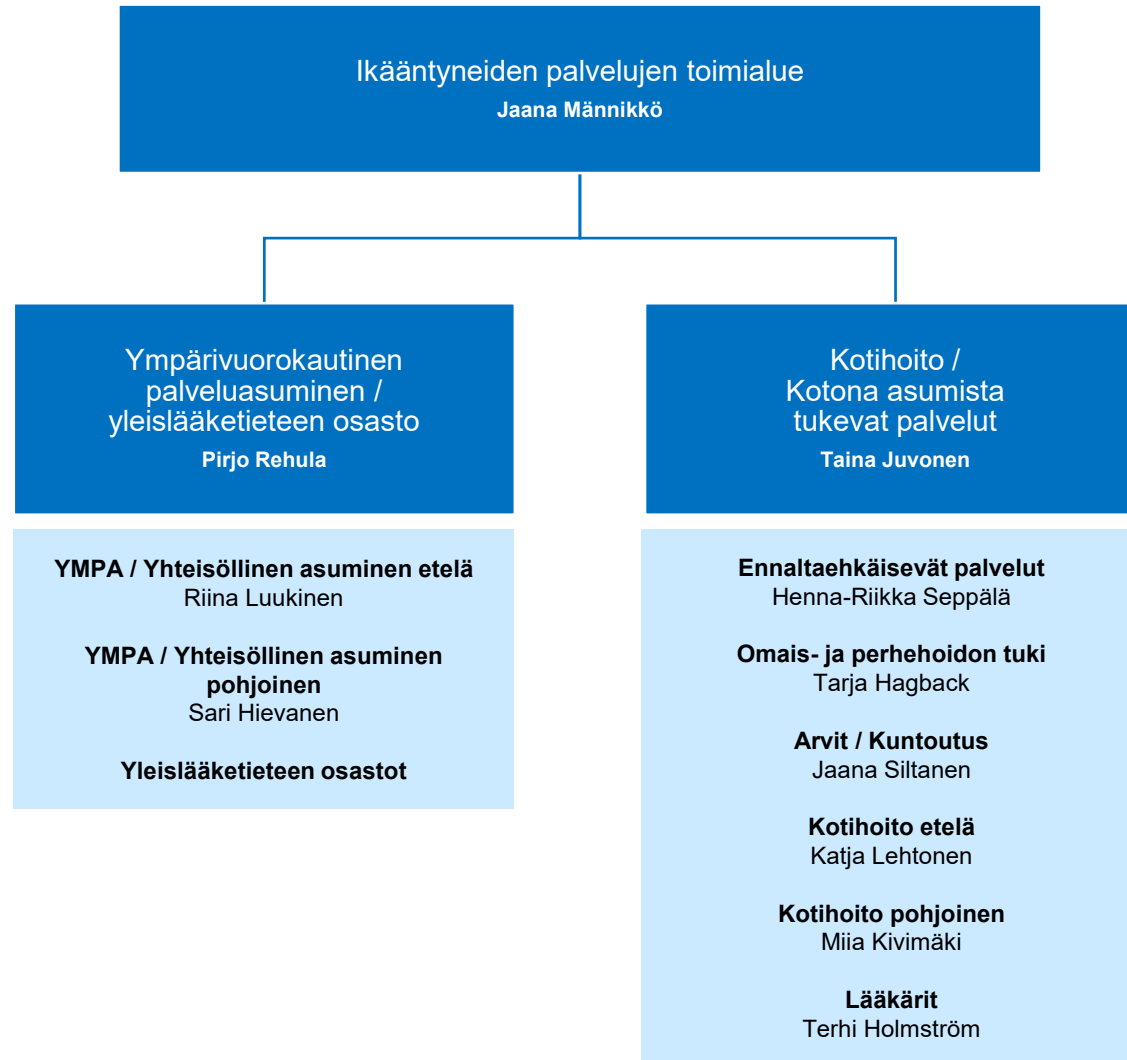
# Organisaatorakenne

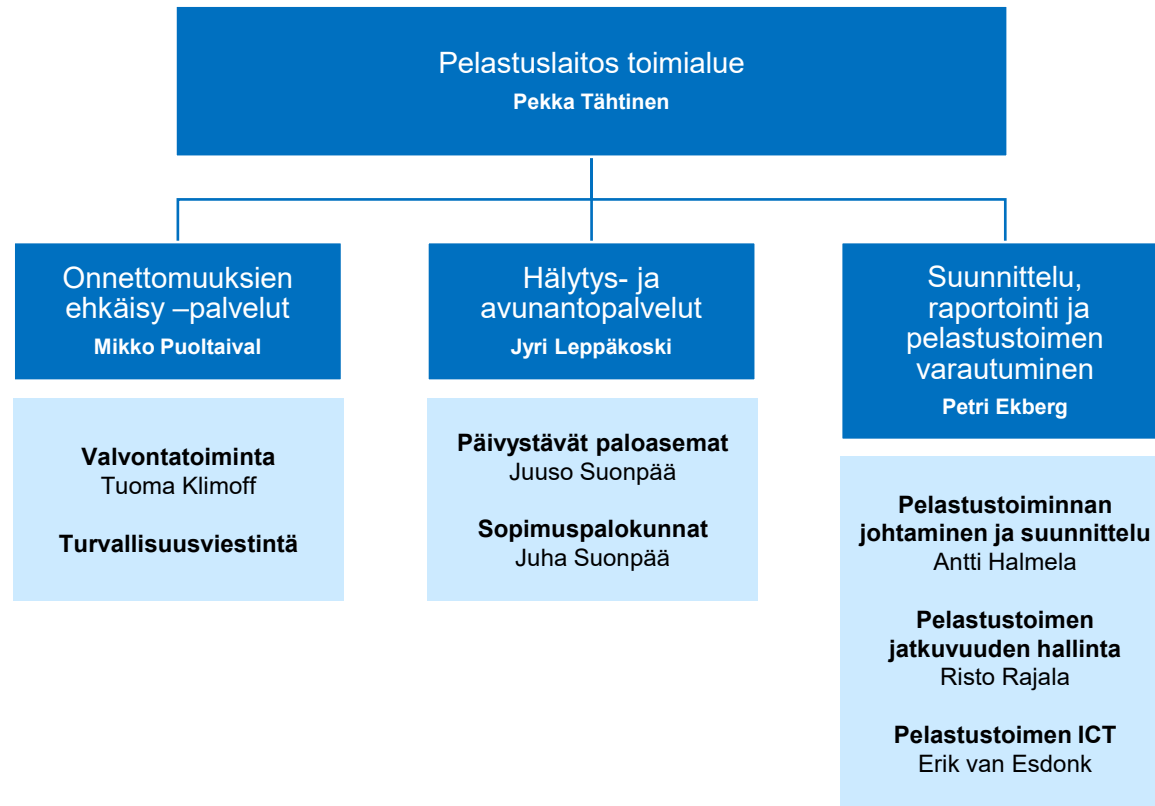


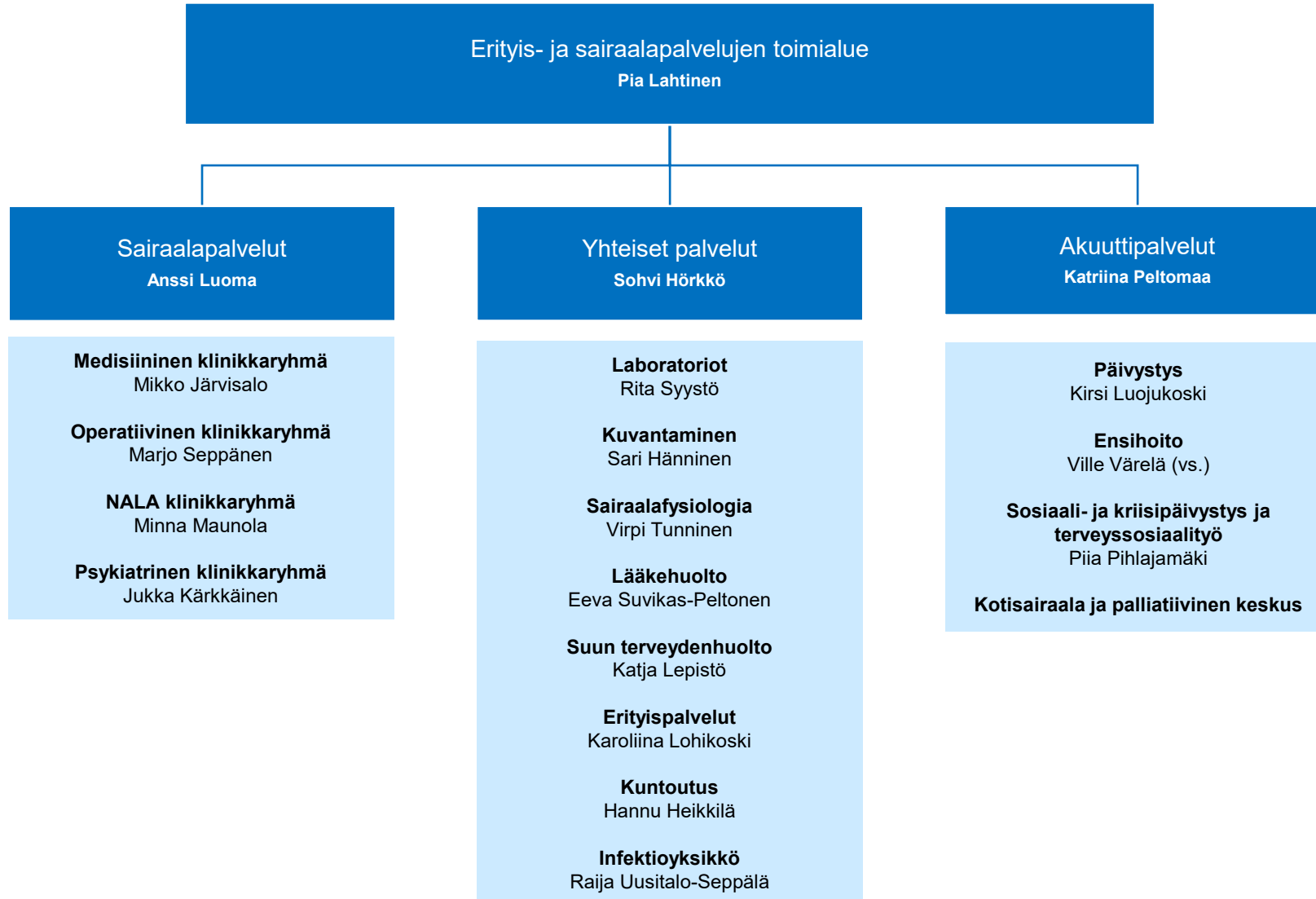


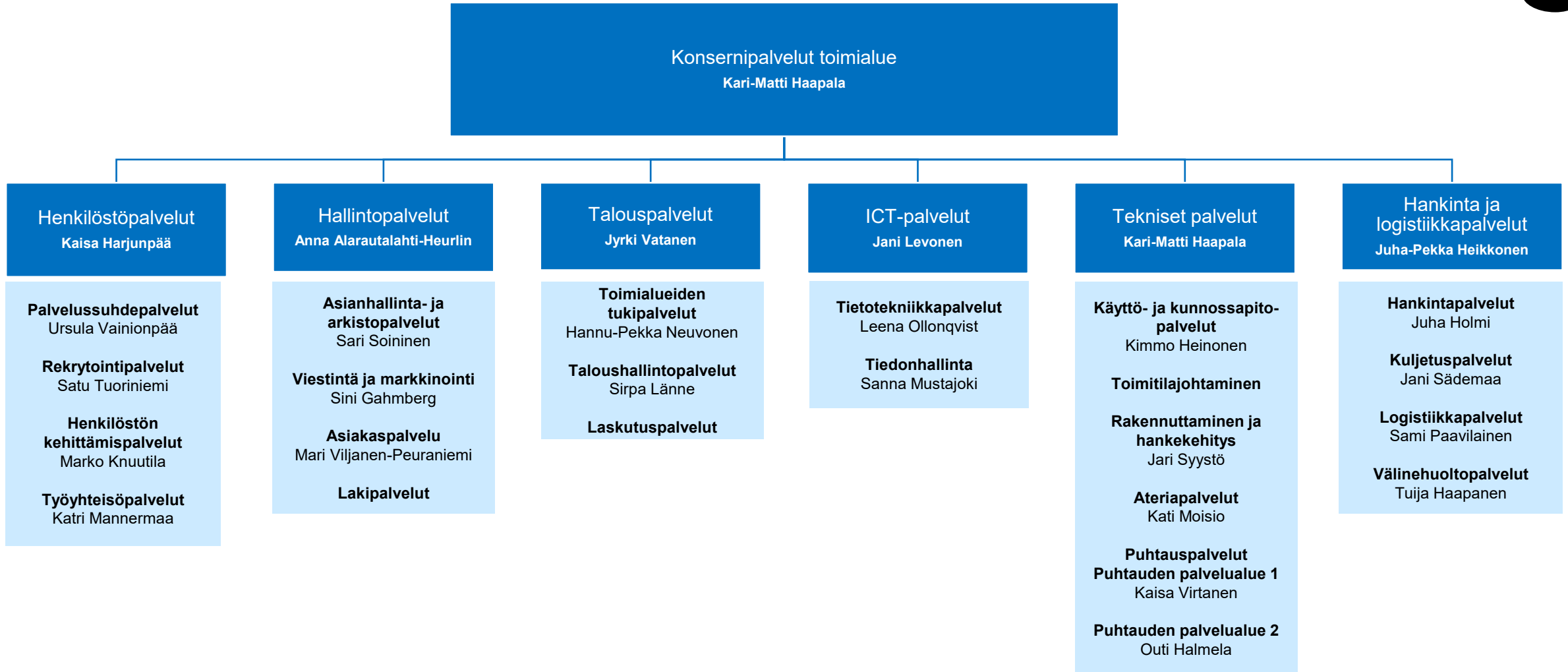














Strategia ja järjestäminen vastuualue toimii  
hyvinvointialuejohtajan alaisuudessa.  
Vastuualue palvelee kaikkia toimialueita.

