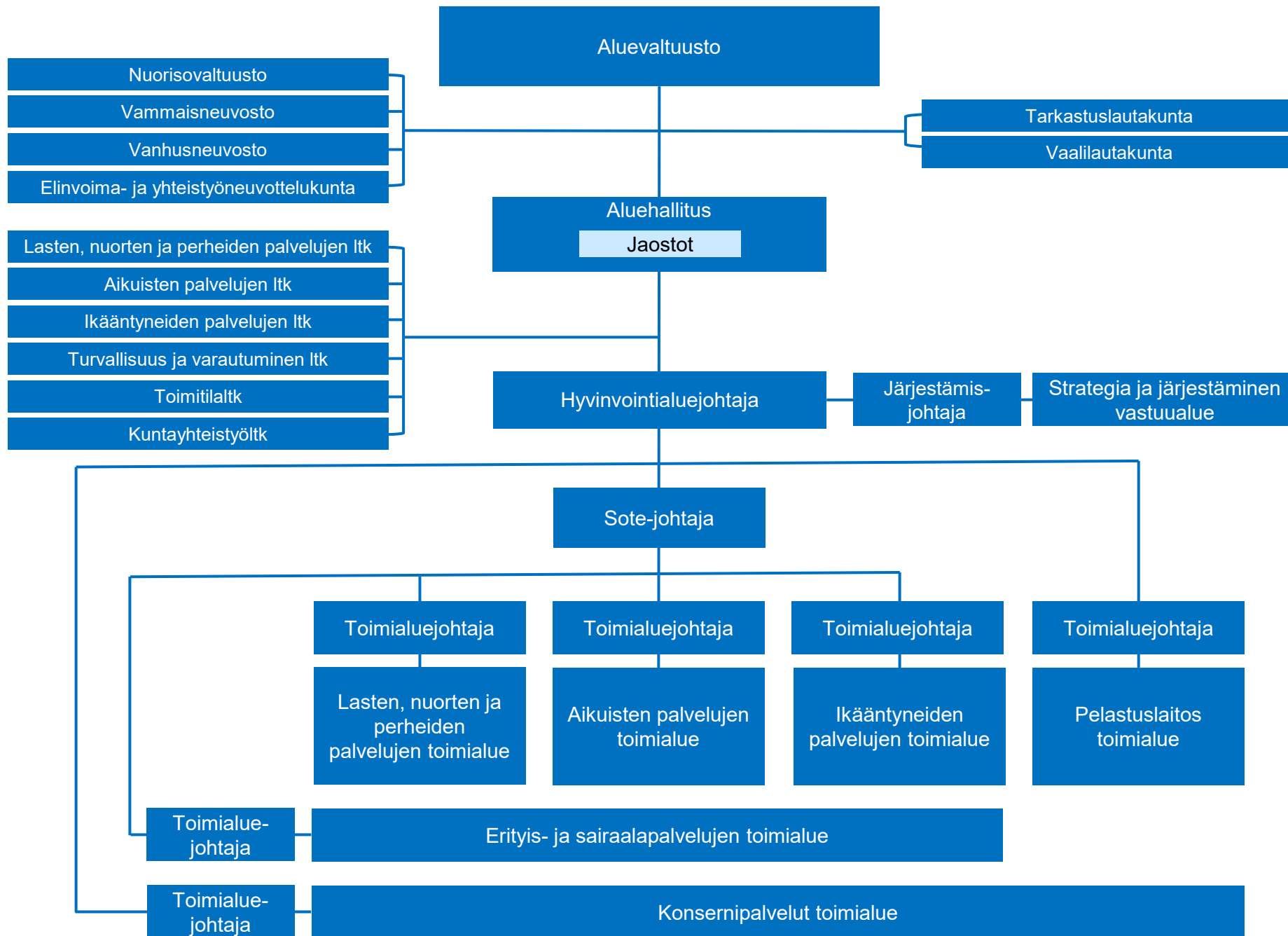




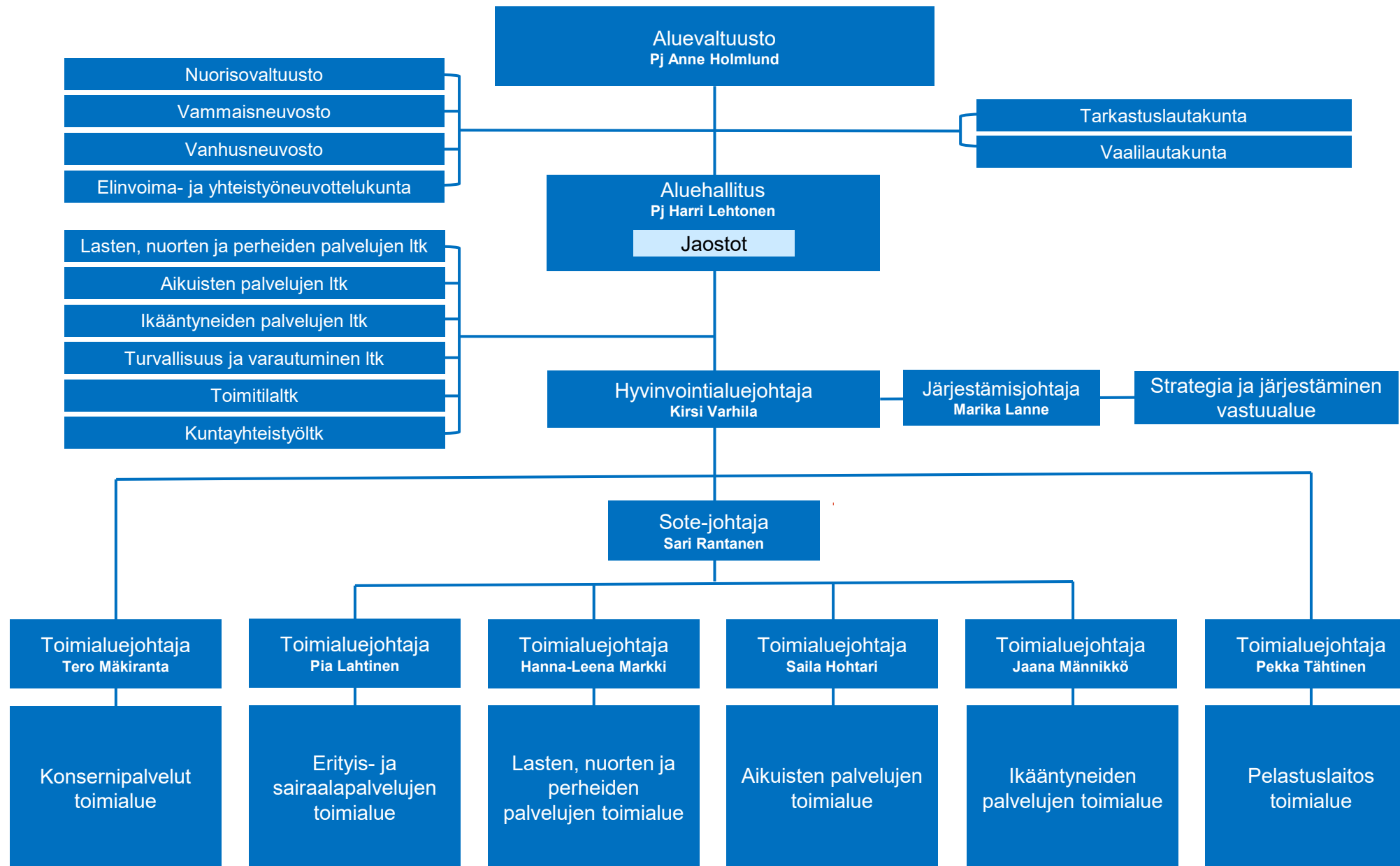
Satakunnan hyvinvointialueen organisaatio

1.11.2024 alkaen

Organisaatiorakenne, kokonaisuus

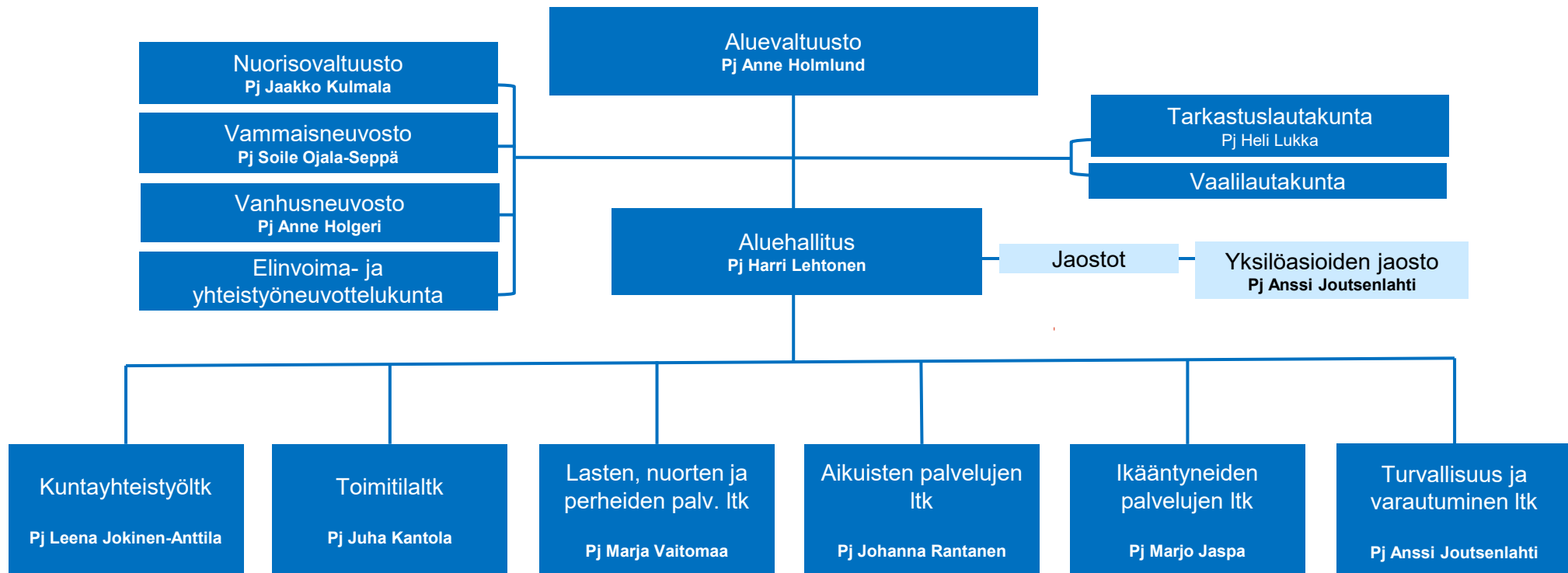


Poliittinen päätöksenteko ja johtamisjärjestelmä



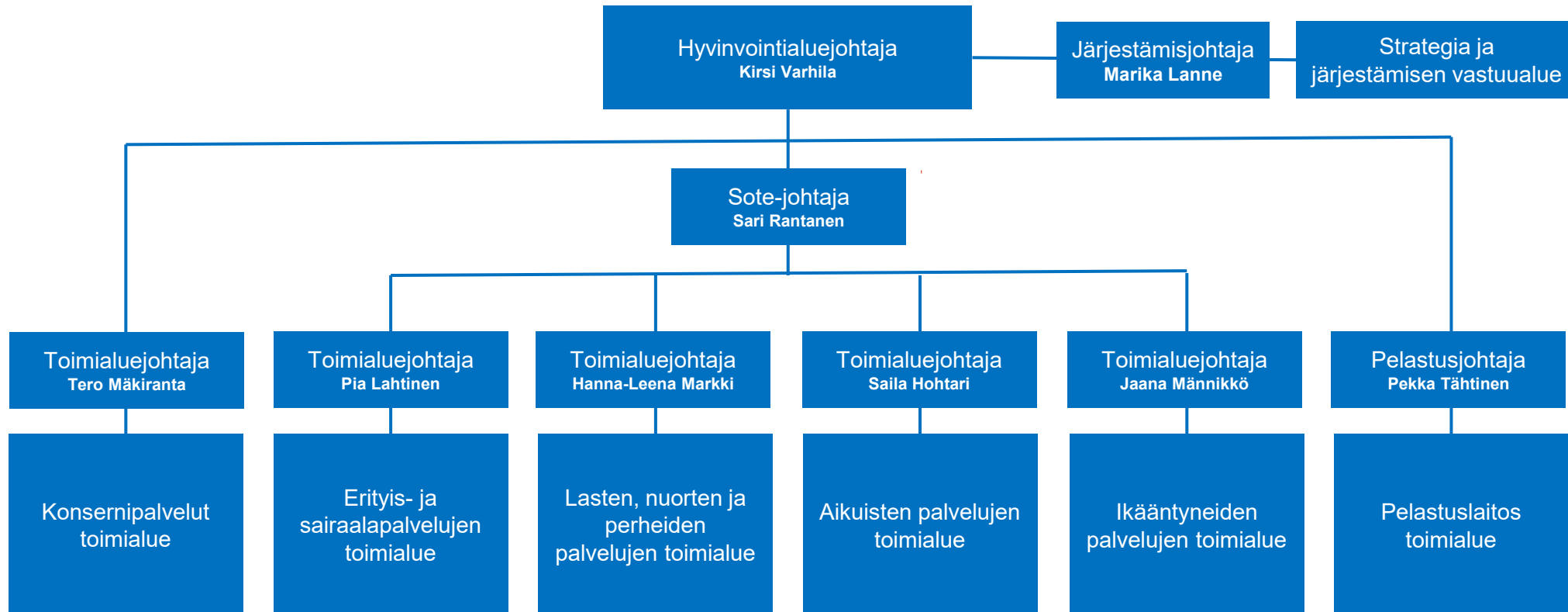


Poliittisen päätöksenteon organisaatorakenne



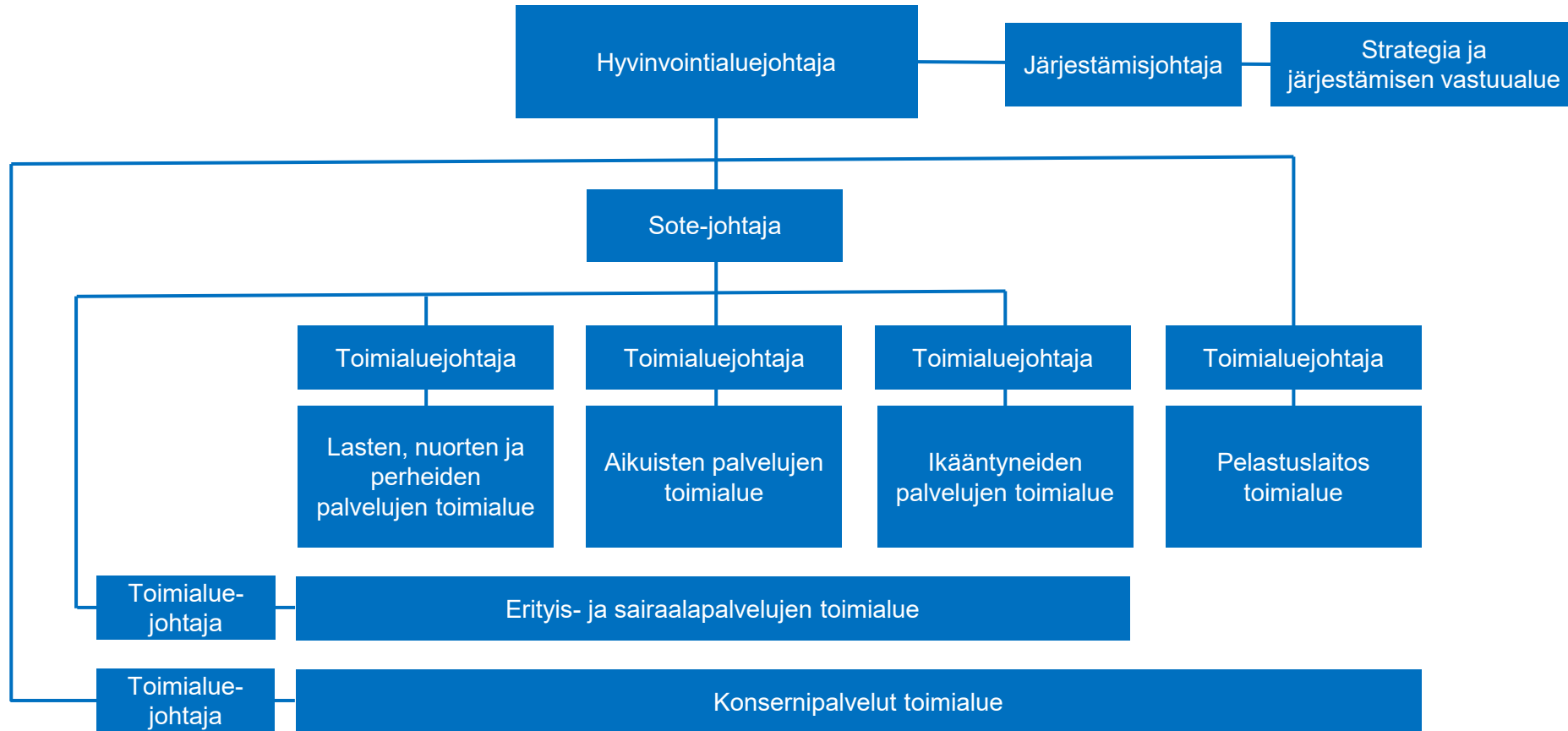


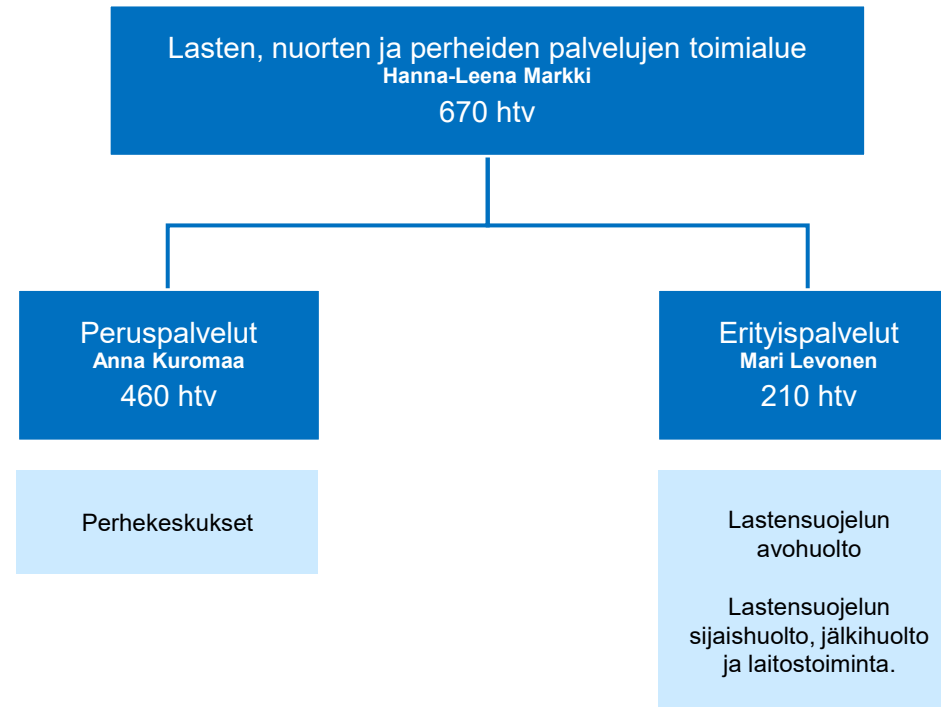
Johtamisjärjestelmä

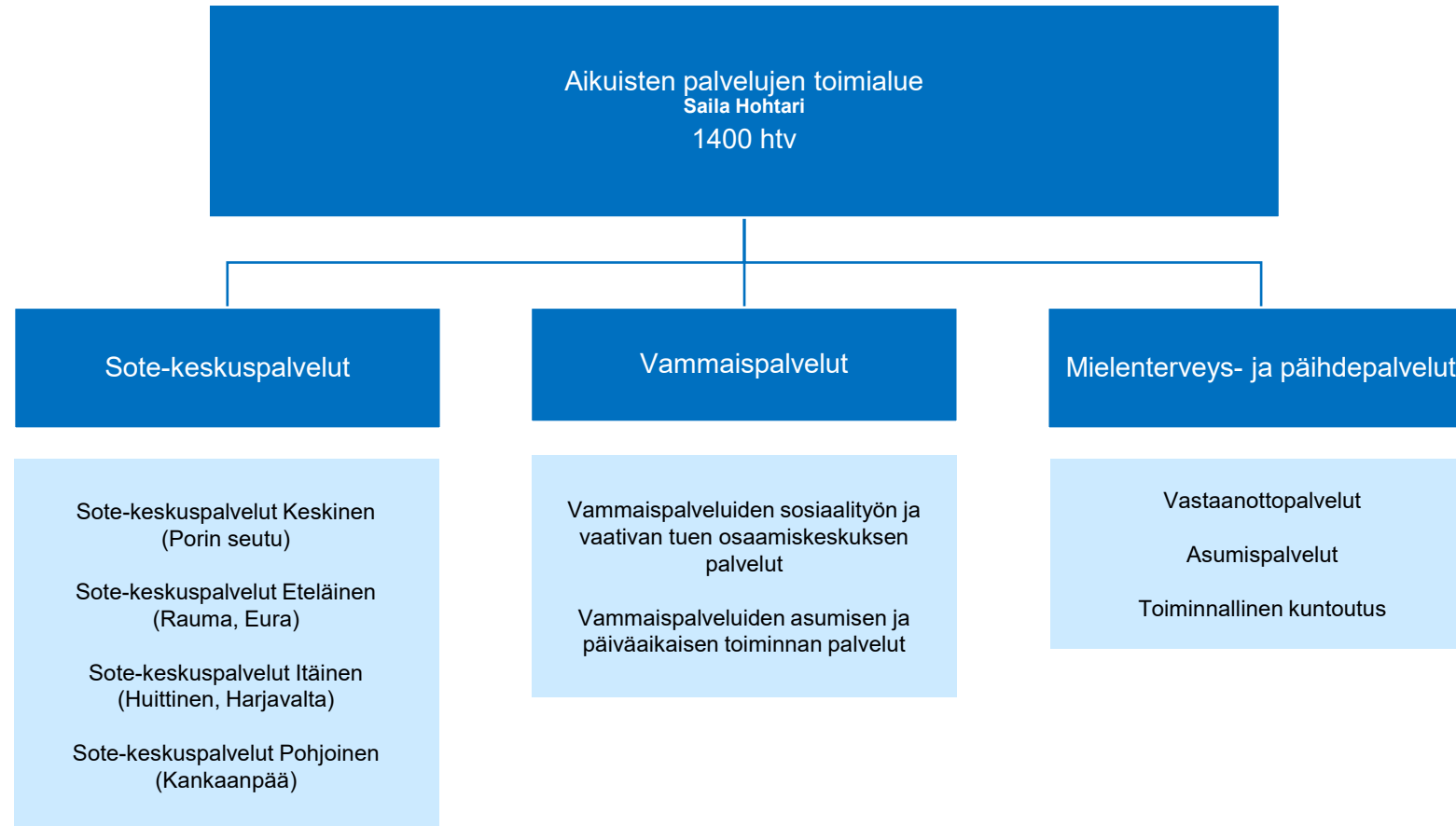


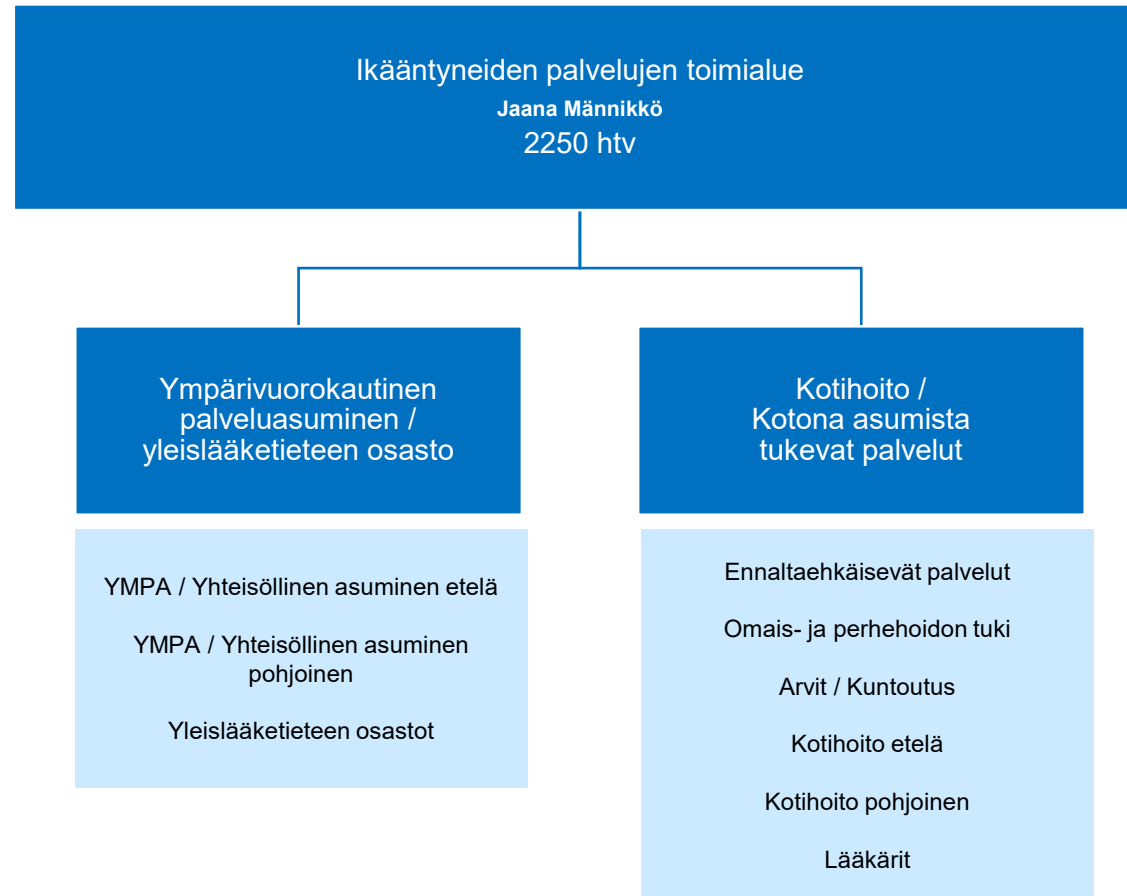


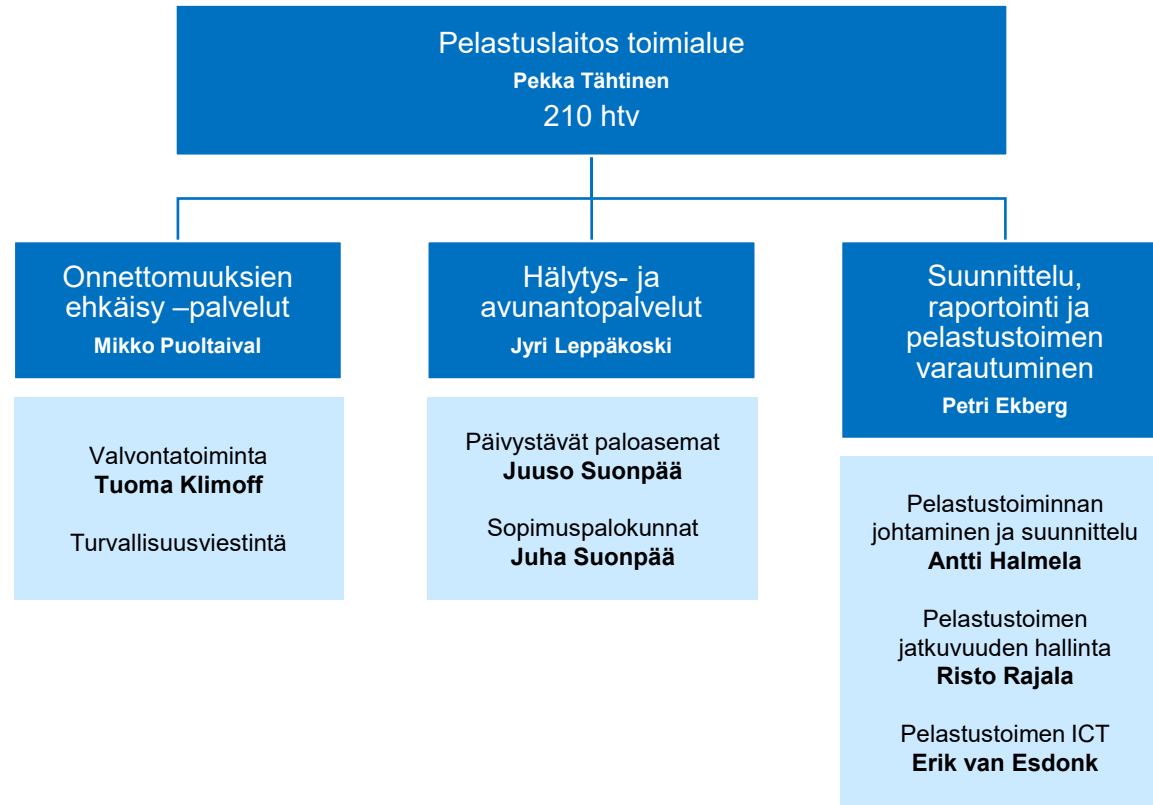
Organisaatorakenne

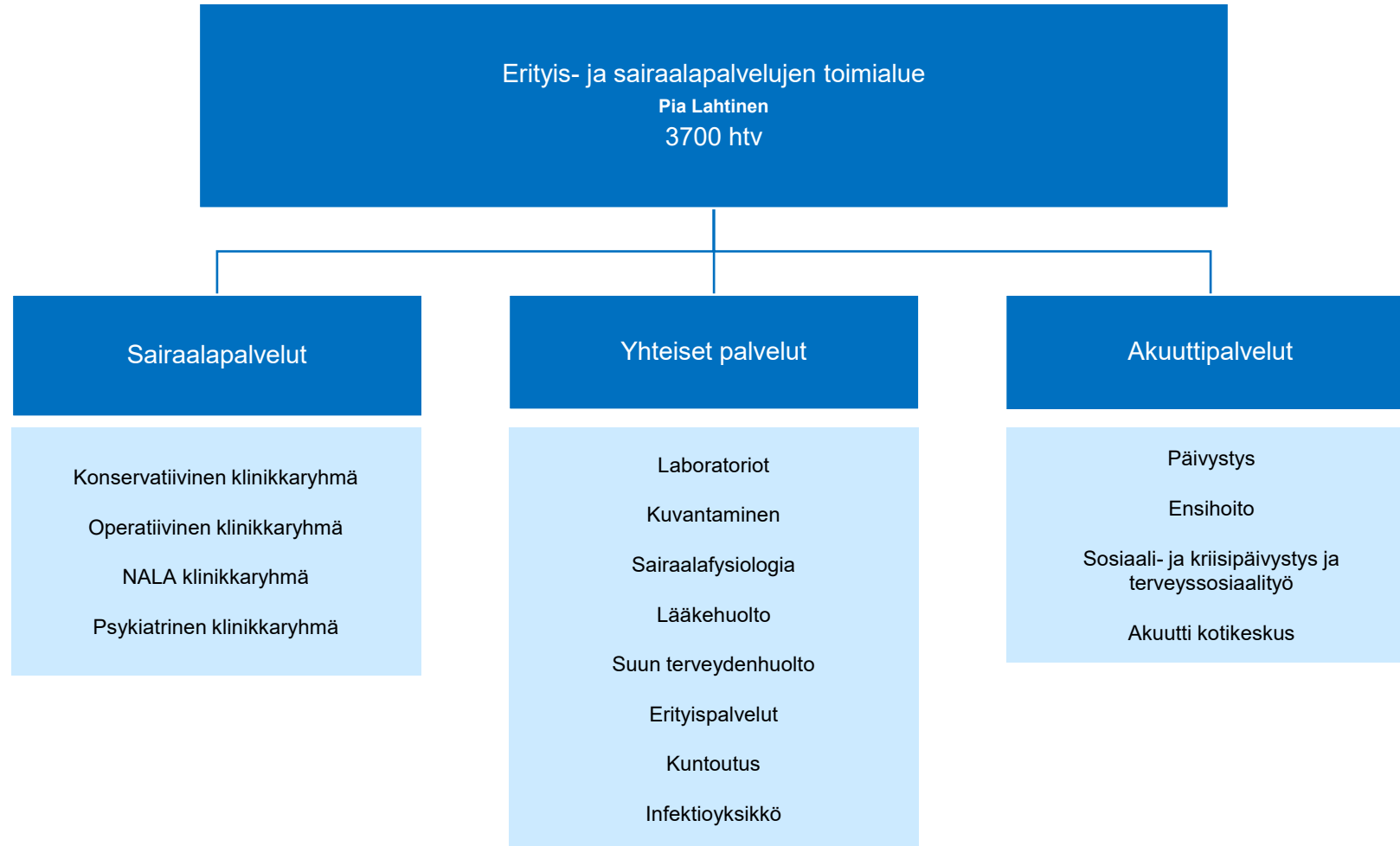


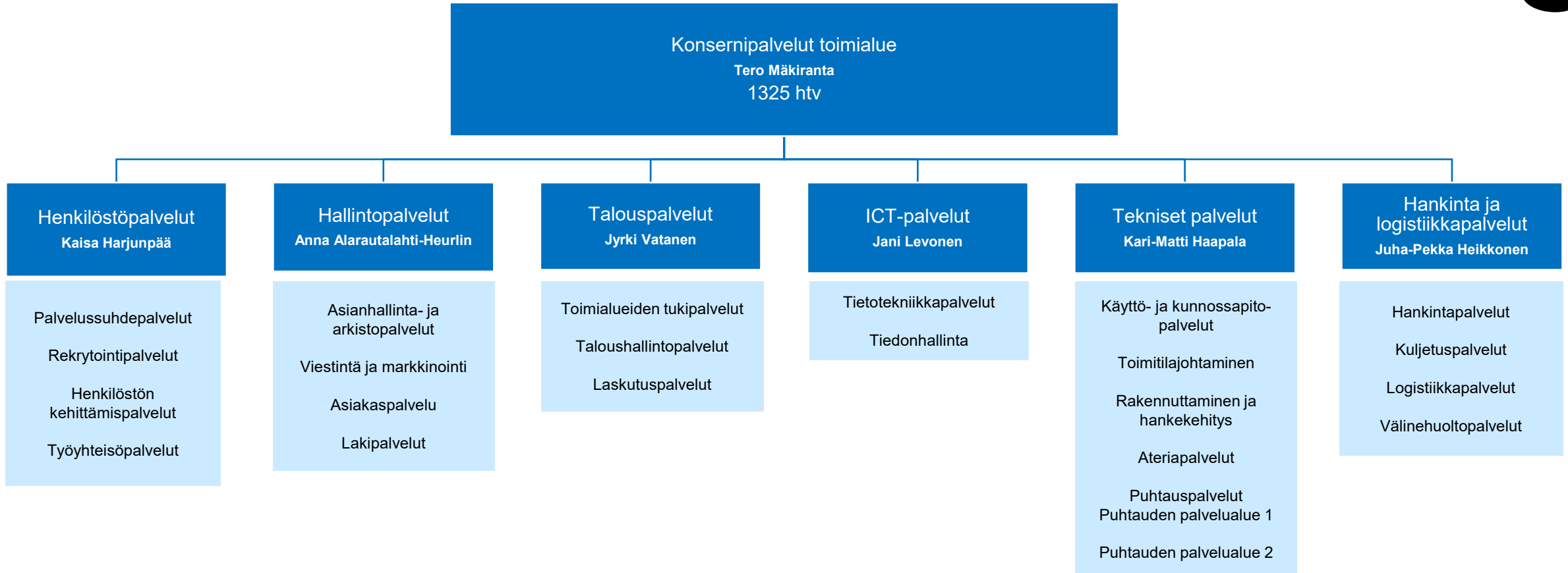














Strategia ja järjestäminen vastuualue toimii
hyvinvointialuejohtajan alaisuudessa.
Vastuualue palvelee kaikkia toimialueita.

