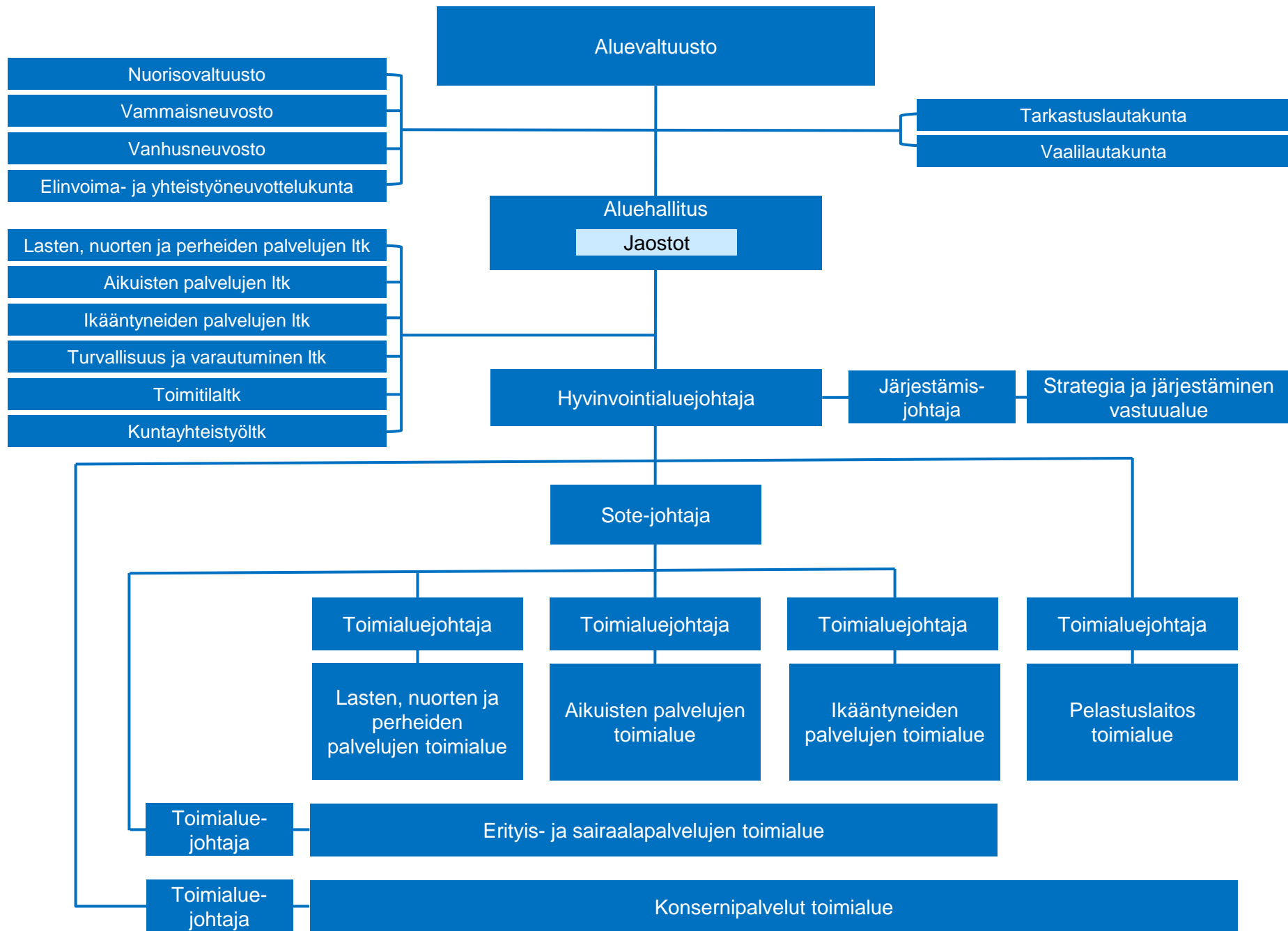


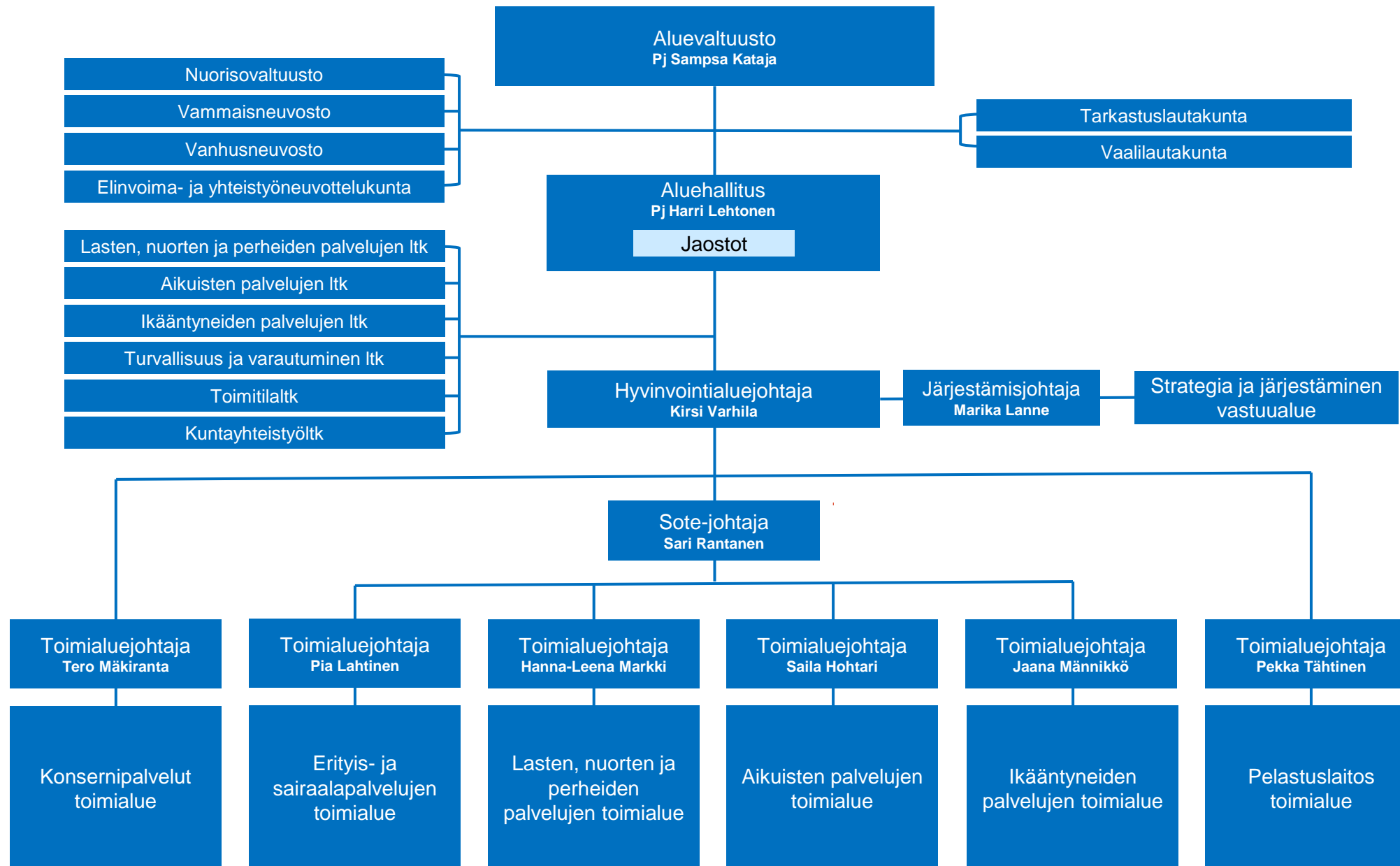


**Satakunnan hyvinvointialueen organisaatio**

# Organisaatiorakenne, kokonaisuus

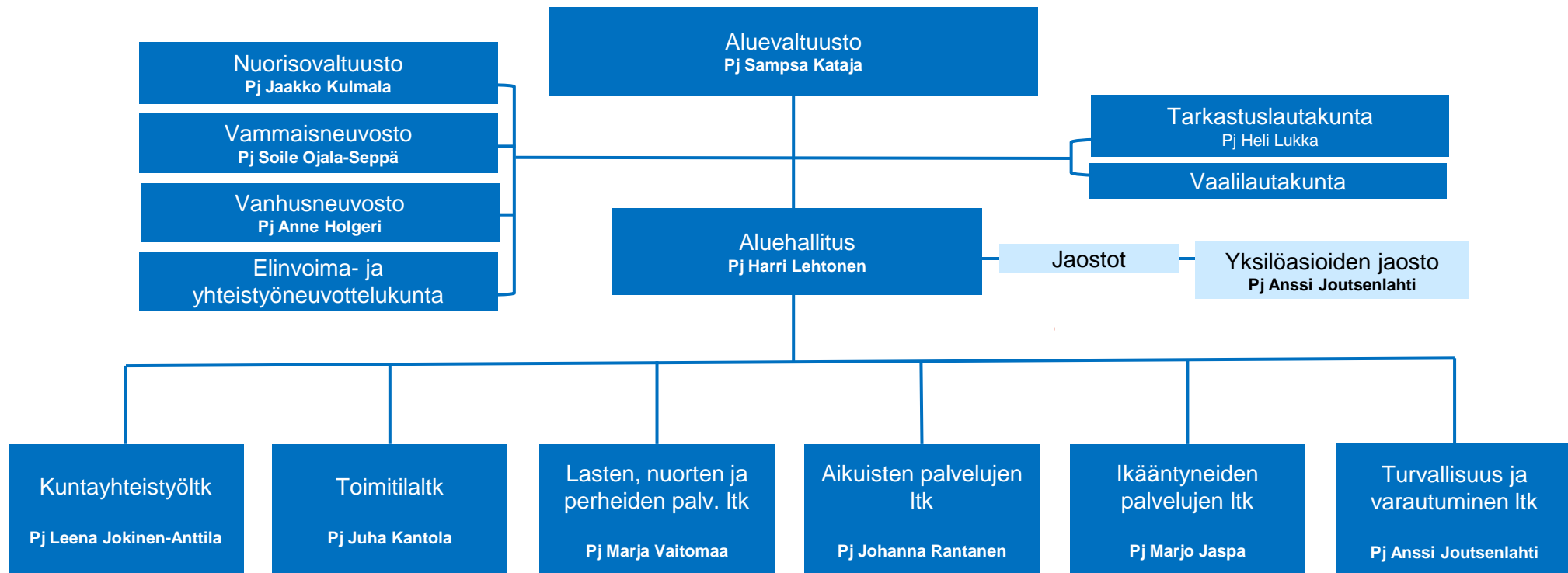


# Poliittinen päätöksenteko ja johtamisjärjestelmä



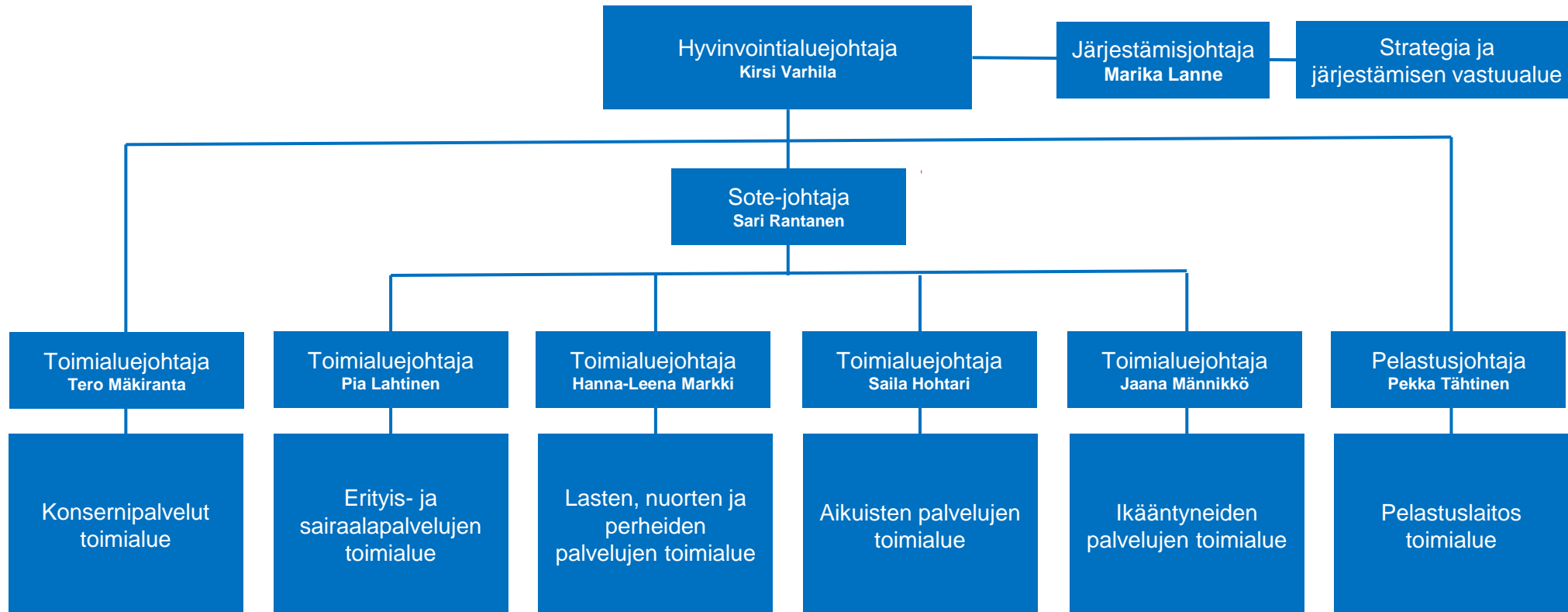


# Poliittisen päätöksenteon organisaatorakenne



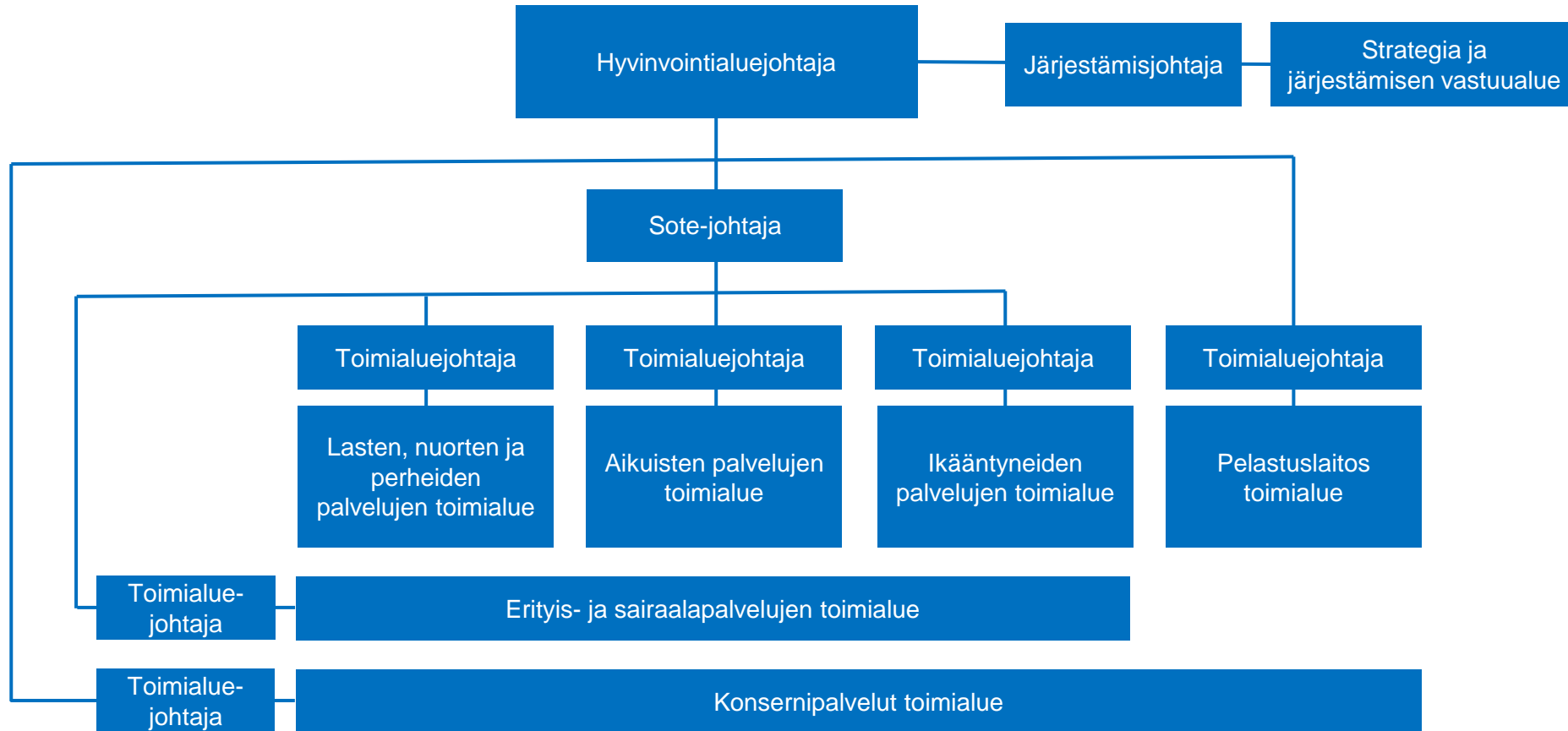


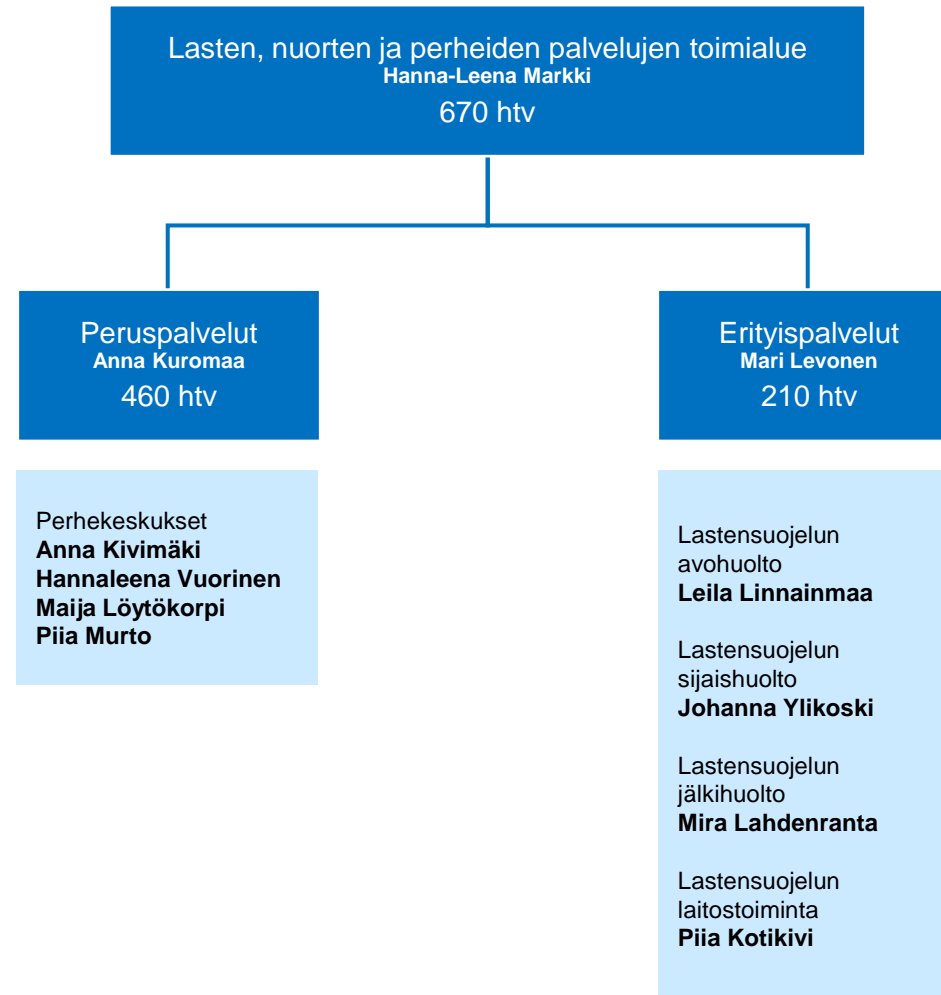
# Johtamisjärjestelmä





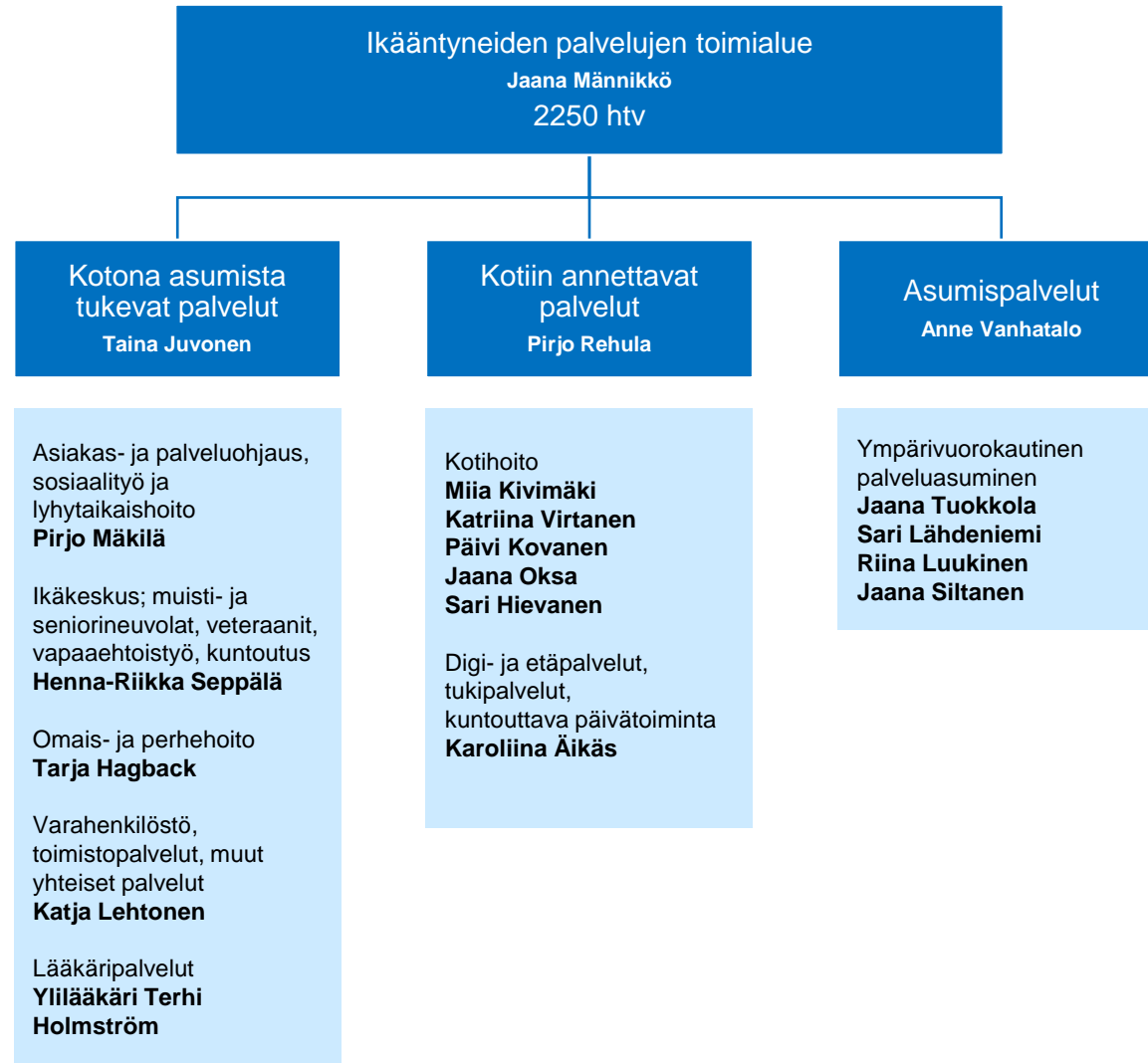
# Organisaatorakenne

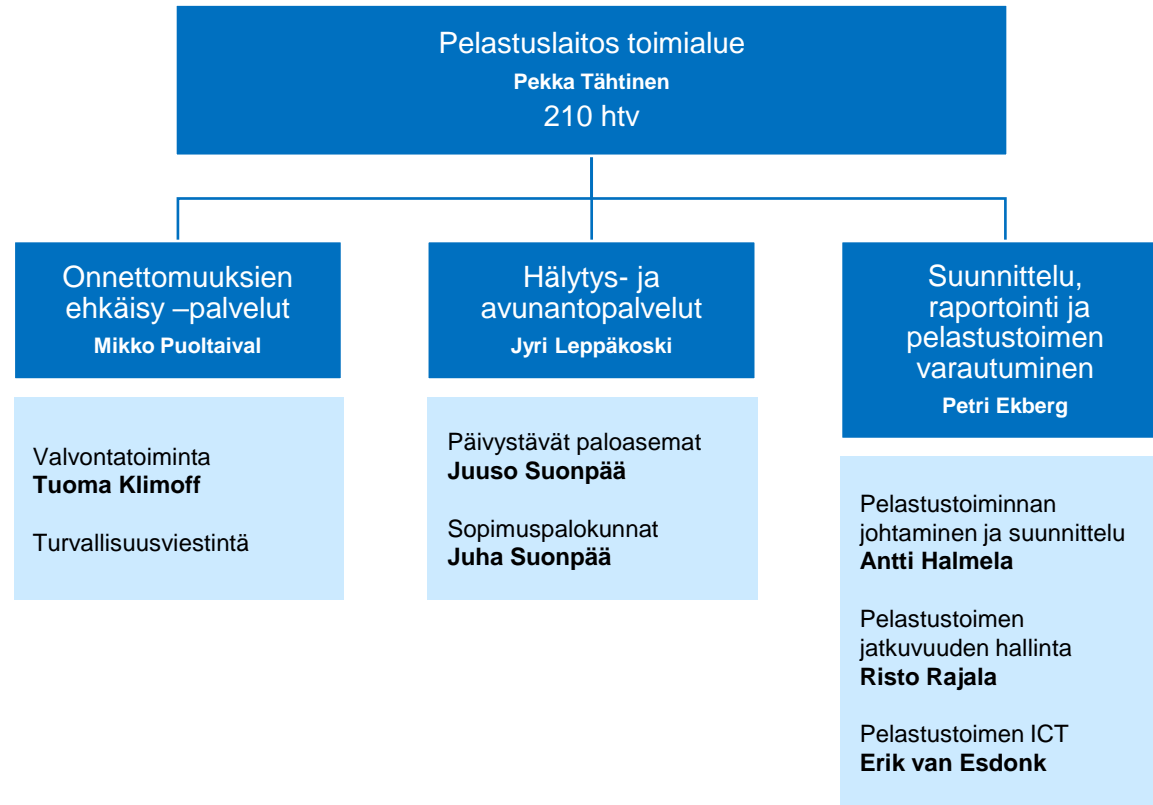


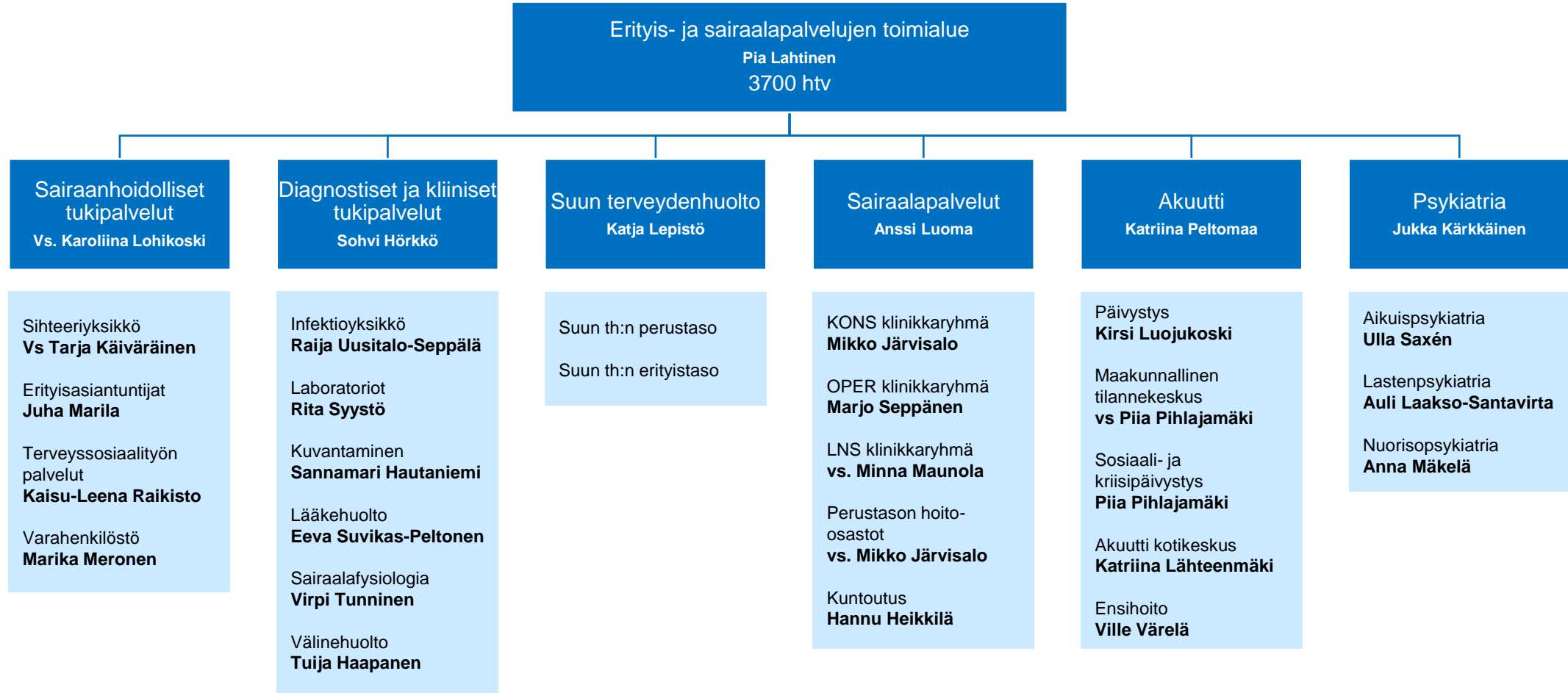


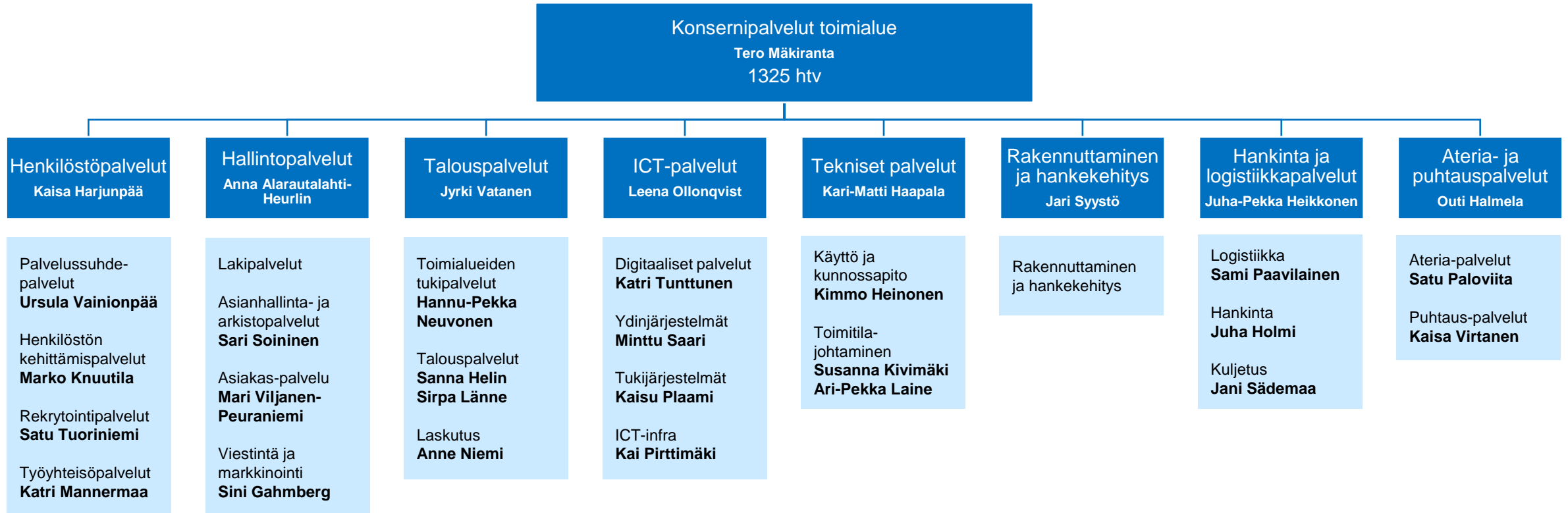














Strategia ja järjestäminen vastuualue toimii hyvinvointialuejohtajan alaisuudessa. Vastuualue palvelee kaikkia toimialueita.

